

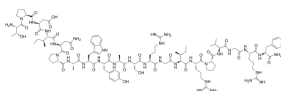
Prolactin Releasing Peptide (12-31), human

Cat. No.:	HY-P1530
CAS No.:	235433-36-0
Batch No.:	309492
Chemical Name:	L-Phenylalaninamide, L-threonyl-L-prolyl-L- α -aspartyl-L-isoleucyl-L-asparaginyl-L-prolyl-L-alanyl-L-tryptophyl-L-tyrosyl-L-alanyl-L-seryl-L-arginylglycyl-L-isoleucyl-L-arginyl-L-prolyl-L-valylglycyl-L-arginyl-

PHYSICAL AND CHEMICAL PROPERTIES

Molecular Formula:	C ₁₀₄ H ₁₅₈ N ₃₂ O ₂₆
Molecular Weight:	2272.57
Storage:	Sealed storage, away from moisture and light, under nitrogen Powder -80°C 2 years -20°C 1 year * In solvent : -80°C, 6 months; -20°C, 1 month (sealed storage, away from moisture and light, under nitrogen)

Chemical Structure:



ANALYTICAL DATA

Appearance:	White to off-white (Solid)
MS:	Consistent with structure
Purity (HPLC):	98.85%
Conclusion:	The product has been tested and complies with the given specifications.

Caution: Product has not been fully validated for medical applications. For research use only.

Tel: 609-228-6898

Fax: 609-228-5909

E-mail: tech@MedChemExpress.com

Address: 1 Deer Park Dr, Suite Q, Monmouth Junction, NJ 08852, USA