

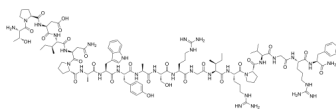
Prolactin Releasing Peptide (12-31), human

Cat. No.: HY-P1530
Batch No.: 309492
CAS No.: 235433-36-0
Molecular Formula: C₁₀₄H₁₅₈N₃₂O₂₆

ANALYTICAL DATA

Theoretical: C(-), H(-), N(-), Peptide Content(≥60.0%)
Result: C(49.63%), H(6.88%), N(17.44%), Peptide Content(88.40%)

Chemical Structure:



Caution: Product has not been fully validated for medical applications. For research use only.

Tel: 609-228-6898

Fax: 609-228-5909

E-mail: tech@MedChemExpress.com

Address: 1 Deer Park Dr, Suite Q, Monmouth Junction, NJ 08852, USA