

## PKG Substrate

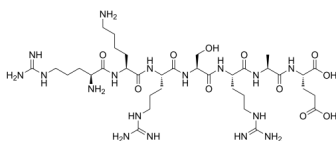
---

Cat. No.: HY-P1561  
Batch No.: 149506  
CAS No.: 81187-14-6  
Molecular Formula: C<sub>35</sub>H<sub>67</sub>N<sub>17</sub>O<sub>11</sub>

### ANALYTICAL DATA

Theoretical: C(-), H(-), N(-), Peptide Content(≥60.0%)  
Result: C(39.14%), H(8.44%), N(21.74%), Peptide Content(82.41%)

Chemical Structure:



**Caution: Product has not been fully validated for medical applications. For research use only.**

Tel: 609-228-6898

Fax: 609-228-5909

E-mail: [tech@MedChemExpress.com](mailto:tech@MedChemExpress.com)

Address: 1 Deer Park Dr, Suite Q, Monmouth Junction, NJ 08852, USA