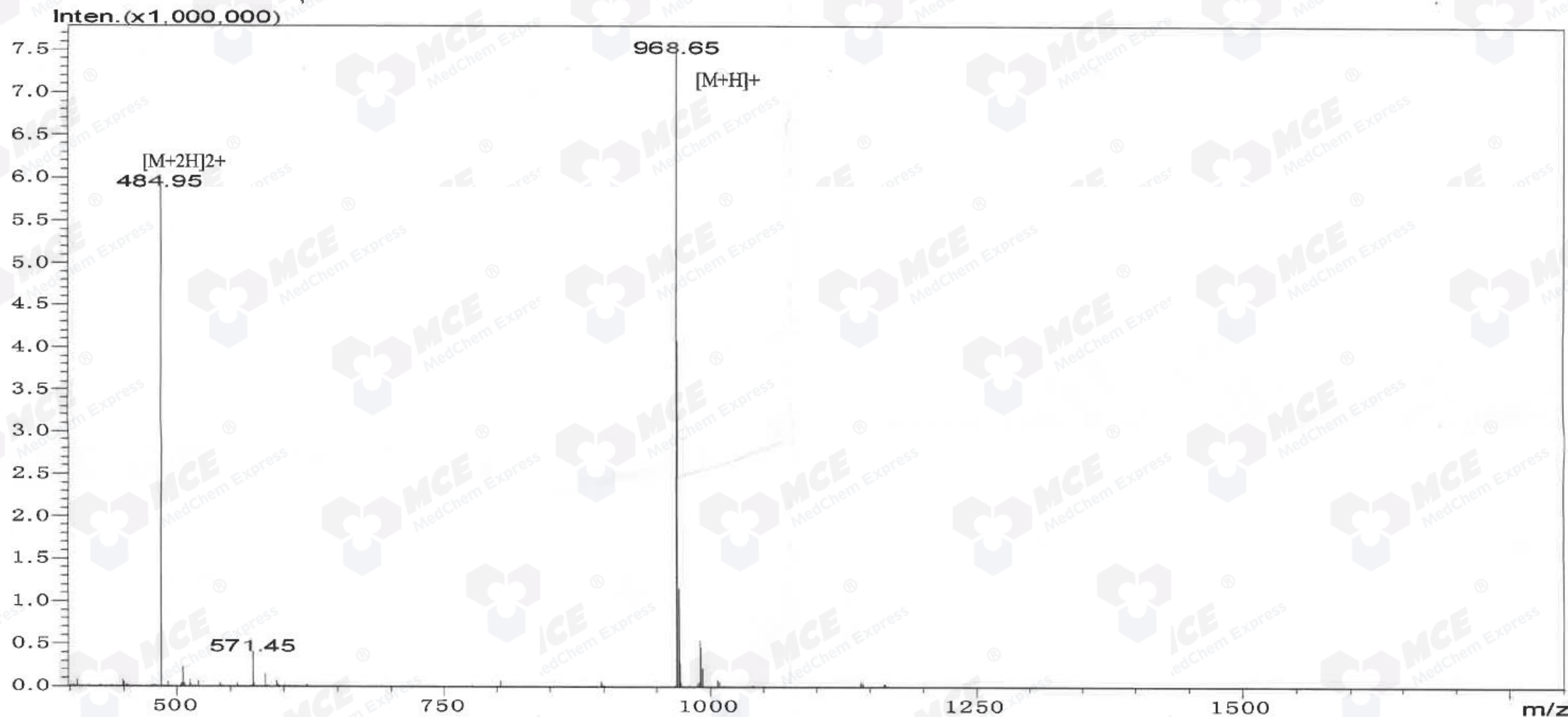


MASS SPECTROMETRY REPORT



Sample Description

Analyzed date: 2018-8-22
 Analyst: Han
 Sample: Sar-RI-7
 M.W.: 968.18
 Lot. No.: NJP50391-180803

Instrument

SHIMADZU LCMS-2010EV
 Probe: ESI
 Nebulizer Gas Flow: 1.5L/min
 CDL: -20.0v
 CDL Temp.: 250 °C
 Block Temp.: 200 °C

Probe Bias: +4.5kv
 Detector: 1.5kv
 T. Flow: 0.2ml/min
 B. Conc.: 50%H2O/50%ACN