

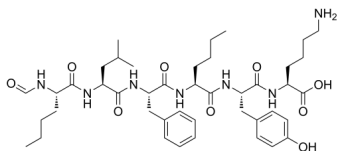
## N-Formyl-Nle-Leu-Phe-Nle-Tyr-Lys

Cat. No.: HY-P1591  
Batch No.: 147159  
CAS No.: 71901-21-8  
Molecular Formula: C<sub>43</sub>H<sub>65</sub>N<sub>7</sub>O<sub>9</sub>

### ANALYTICAL DATA

Theoretical: C(-), H(-), N(-), Peptide Content(≥60.0%)  
Result: C(57.05%), H(7.55%), N(10.91%), Peptide Content(91.70%)

Chemical Structure:



**Caution: Product has not been fully validated for medical applications. For research use only.**

Tel: 609-228-6898

Fax: 609-228-5909

E-mail: [tech@MedChemExpress.com](mailto:tech@MedChemExpress.com)

Address: 1 Deer Park Dr, Suite Q, Monmouth Junction, NJ 08852, USA