

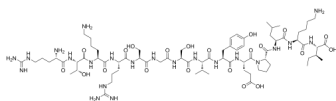
Malantide

Cat. No.: HY-P1597
Batch No.: 66625
CAS No.: 86555-35-3
Molecular Formula: C₇₂H₁₂₄N₂₂O₂₁

ANALYTICAL DATA

Theoretical: C(-), H(-), N(-), Peptide Content(≥60.0%)
Result: C(40.33%), H(6.14%), N(12.36%), Peptide Content(65.57%)

Chemical Structure:



Caution: Product has not been fully validated for medical applications. For research use only.

Tel: 609-228-6898

Fax: 609-228-5909

E-mail: tech@MedChemExpress.com

Address: 1 Deer Park Dr, Suite Q, Monmouth Junction, NJ 08852, USA