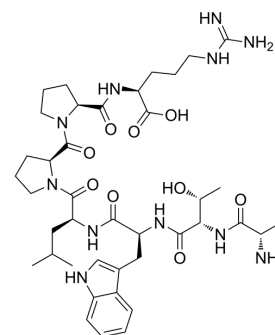


ATWLPPR Peptide

Cat. No.:	HY-P1663
CAS No.:	272121-15-0
Molecular Formula:	C ₄₀ H ₆₁ N ₁₁ O ₉
Molecular Weight:	839.98
Sequence:	Ala-Thr-Trp-Leu-Pro-Pro-Arg
Sequence Shortening:	ATWLPPR
Target:	Others
Pathway:	Others
Storage:	Sealed storage, away from moisture and light, under nitrogen
	Powder -80°C 2 years
	-20°C 1 year



* In solvent : -80°C, 6 months; -20°C, 1 month (sealed storage, away from moisture and light, under nitrogen)

SOLVENT & SOLUBILITY

In Vitro

DMSO : 100 mg/mL (119.05 mM; Need ultrasonic)

Concentration	Mass		
	1 mg	5 mg	10 mg
1 mM	1.1905 mL	5.9525 mL	11.9050 mL
5 mM	0.2381 mL	1.1905 mL	2.3810 mL
10 mM	0.1191 mL	0.5953 mL	1.1905 mL

Please refer to the solubility information to select the appropriate solvent.

BIOLOGICAL ACTIVITY

Description

ATWLPPR Peptide is a biological active peptide. (This peptide is a specific VEGFR2/KDR heptapeptide antagonist, it binds VEGFR2 (KDR/flk), completely inhibiting VEGF binding to KDR and preventing VEGF-induced angiogenesis in-vivo. It specifically inhibits human endothelial cell proliferation in-vitro and totally abolishes VEGF-induced angiogenesis in-vivo.)

CUSTOMER VALIDATION

- Sci Adv. 2020 Nov 25;6(48):eabc4493.

See more customer validations on www.MedChemExpress.com

Caution: Product has not been fully validated for medical applications. For research use only.

Tel: 609-228-6898

Fax: 609-228-5909

E-mail: tech@MedChemExpress.com

Address: 1 Deer Park Dr, Suite Q, Monmouth Junction, NJ 08852, USA