

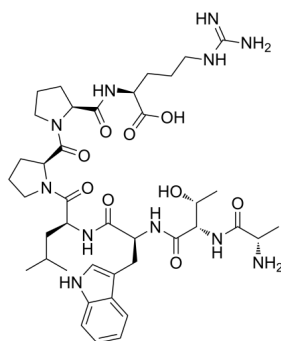
## ATWLPPR Peptide

Cat. No.: HY-P1663  
Batch No.: 293705  
CAS No.: 272121-15-0  
Molecular Formula: C<sub>40</sub>H<sub>61</sub>N<sub>11</sub>O<sub>9</sub>

### ANALYTICAL DATA

Theoretical: C(-), H(-), N(-), Peptide Content(≥60.0%)  
Result: C(49.59%), H(7.01%), N(15.76%), Peptide Content(85.90%)

Chemical Structure:



**Caution: Product has not been fully validated for medical applications. For research use only.**

Tel: 609-228-6898

Fax: 609-228-5909

E-mail: [tech@MedChemExpress.com](mailto:tech@MedChemExpress.com)

Address: 1 Deer Park Dr, Suite Q, Monmouth Junction, NJ 08852, USA