

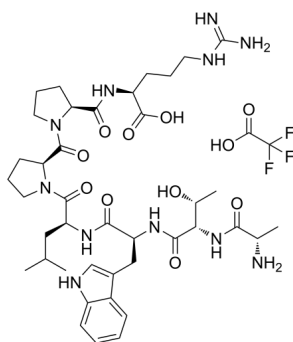
ATWLPPR Peptide (TFA)

Cat. No.: HY-P1663A
Batch No.: 120586
Molecular Formula: C₄₂H₆₂F₃N₁₁O₁₁

ANALYTICAL DATA

Theoretical: C(-), H(-), N(-), Peptide Content(≥60.0%)
Result: C(46.40%), H(5.99%), N(13.56%), Peptide Content(73.9%)

Chemical Structure:



Caution: Product has not been fully validated for medical applications. For research use only.

Tel: 609-228-6898

Fax: 609-228-5909

E-mail: tech@MedChemExpress.com

Address: 1 Deer Park Dr, Suite Q, Monmouth Junction, NJ 08852, USA