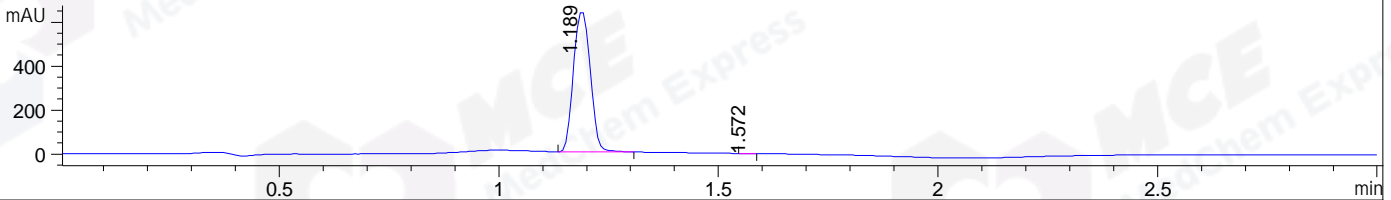
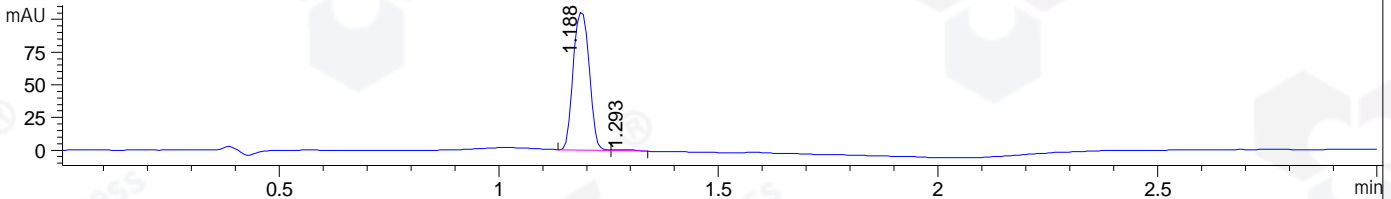


File ..DATA\2020\20200810\1065\BIZ2020-807-SCH14.D Tgt Mass (CHM):  
Injection Date : 10 Aug 20 4:28 pm +0800 Seq. Line : 4  
Sample Name : BIZ2020-807-SCH14 Location : P1-A-07  
Acq. Operator : zyj\_1547 Inj : 1  
Spec. Reported : MS Integration Inj Volume : 5 ul  
Acq. Method : D:\Chem32\1\data\2020\20200810\1065\1-POS-3MIN-1(500-2000).M  
Analysis Method : D:\CHEM32\1\DATA\2020\20200810\1065\1-POS-3MIN-1(500-2000).M  
Catalog No : HY-P1717B  
Method Info : Mobile Phase: A: water(0.01%TFA) B:ACN(0.01%TFA)  
Gradient: 5% to 95%B within 1.3 min  
Flow Rate :1.8ml/min  
Column :SunFire C18, 4.6\*50mm,3.5um A-RP-314  
Oven Temperature : 45C  
Positive,MS:500-2000

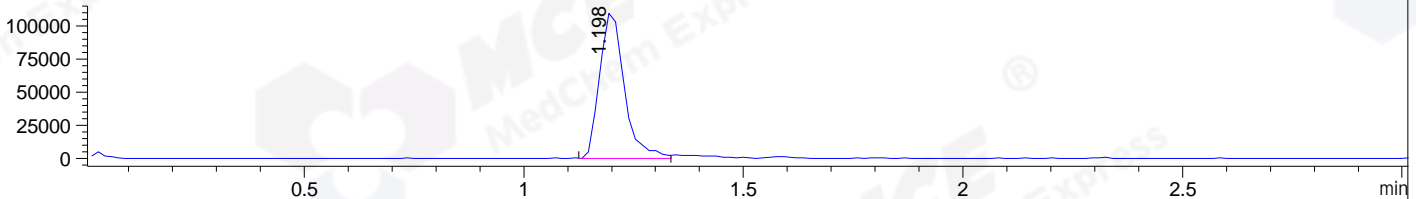
DAD1 B, Sig=214,4 Ref=off



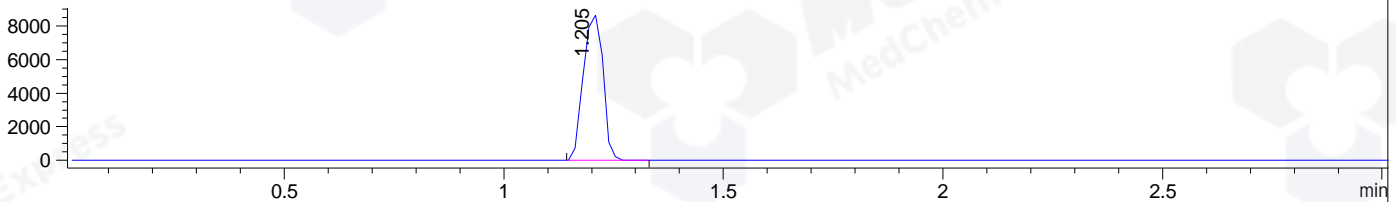
DAD1 C, Sig=254,4 Ref=off



MSD1 TIC, MS File ES-API, Pos, Scan, Frag: 70



Ion 1790, MSD1 1790, Target Mass 1789 +H Positive, EIC=1789.7:1790.7



## Integration Results for DAD1 B, Sig=214,4 Ref=off

RetTim	Width	Area	Height	Area%	MS (+)
1.19	0.04	1705.29	646.83	99.93	597
1.57	0.04	1.27	0.60	0.07	ND

## Integration Results for DAD1 C, Sig=254,4 Ref=off

RetTim	Width	Area	Height	Area%	MS (+)
1.19	0.04	267.78	106.39	98.85	597
1.29	0.05	3.10	0.97	1.15	895

## Integration Results for MSD1 TIC, MS File

RetTim	Width	Area	Height	Area%	MS (+)
1.20	0.06	432976.22	111553.63	100.00	597

Ret. Time: 1.20

<<<< POSITIVE SPECTRA >>>>

ES-API Positive

