

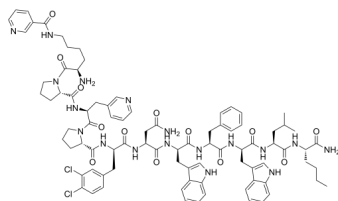
Spantide II

Cat. No.: HY-P1722
Batch No.: 322862
CAS No.: 129176-97-2
Molecular Formula: C₈₆H₁₀₄Cl₂N₁₈O₁₃

ANALYTICAL DATA

Theoretical: C(-), H(-), N(-), Peptide Content(≥60.0%)
Result: C(54.96%), H(5.89%), N(13.24%), Peptide Content(87.68%)

Chemical Structure:



Caution: Product has not been fully validated for medical applications. For research use only.

Tel: 609-228-6898

Fax: 609-228-5909

E-mail: tech@MedChemExpress.com

Address: 1 Deer Park Dr, Suite Q, Monmouth Junction, NJ 08852, USA