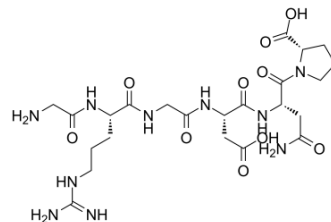


## RGD peptide (GRGDNP) (TFA)

<b>Cat. No.:</b>	HY-P1740A		
<b>Molecular Formula:</b>	C <sub>25</sub> H <sub>39</sub> F <sub>3</sub> N <sub>10</sub> O <sub>12</sub>		
<b>Molecular Weight:</b>	728.63		
<b>Sequence:</b>	Gly-Arg-Gly-Asp-Asn-Pro		
<b>Sequence Shortening:</b>	GRGDNP		
<b>Target:</b>	Integrin; Apoptosis		
<b>Pathway:</b>	Cytoskeleton; Apoptosis		
<b>Storage:</b>	Powder	-80°C	2 years
		-20°C	1 year
	In solvent	-80°C	6 months
		-20°C	1 month



### SOLVENT & SOLUBILITY

#### In Vitro

DMSO : ≥ 50 mg/mL (68.62 mM)  
 H<sub>2</sub>O : ≥ 50 mg/mL (68.62 mM)  
 \* "≥" means soluble, but saturation unknown.

	Solvent Concentration	Mass	1 mg	5 mg	10 mg
Preparing Stock Solutions	1 mM		1.3724 mL	6.8622 mL	13.7244 mL
	5 mM		0.2745 mL	1.3724 mL	2.7449 mL
	10 mM		0.1372 mL	0.6862 mL	1.3724 mL

Please refer to the solubility information to select the appropriate solvent.

### BIOLOGICAL ACTIVITY

#### Description

RGD peptide (GRGDNP) (TFA) acts as an inhibitor of integrin-ligand interactions and plays an important role in cell adhesion, migration, growth, and differentiation<sup>[1]</sup>. RGD peptide (GRGDNP) (TFA) promote apoptosis through activation of conformation changes that enhance pro-caspase-3 activation and autoprocessing<sup>[2][3]</sup>.

### CUSTOMER VALIDATION

- Biofabrication. 2021 Apr 9.

See more customer validations on [www.MedChemExpress.com](http://www.MedChemExpress.com)

---

## REFERENCES

---

- [1]. Ruoslahti, E., and Öbrink, B. Common principles in cell adhesion *Experimental Cell Research* 227, 1-11 (1996).
  - [2]. Meredith JE Jr, et al. Integrins, adhesion and apoptosis. *Trends Cell Biol.* 1997 Apr;7(4):146-50.
  - [3]. Yang W, et al. Activation of the Cdc42-associated tyrosine kinase-2 (ACK-2) by cell adhesion via integrin beta1. *J Biol Chem.* 1999 Mar 26;274(13):8524-30.
- 

**Caution: Product has not been fully validated for medical applications. For research use only.**

Tel: 609-228-6898

Fax: 609-228-5909

E-mail: [tech@MedChemExpress.com](mailto:tech@MedChemExpress.com)

Address: 1 Deer Park Dr, Suite Q, Monmouth Junction, NJ 08852, USA