

## Adrenomedullin (16-31), human

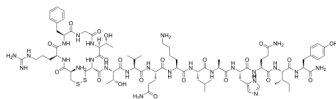
---

Cat. No.: HY-P1770  
Batch No.: 147161  
CAS No.: 318480-38-5  
Molecular Formula: C<sub>82</sub>H<sub>129</sub>N<sub>25</sub>O<sub>21</sub>S<sub>2</sub>

### ANALYTICAL DATA

Theoretical: C(-), H(-), N(-), Peptide Content(≥60.0%)  
Result: C(47.29%), H(6.74%), N(15.91%), Peptide Content(84.80%)

Chemical Structure:



**Caution: Product has not been fully validated for medical applications. For research use only.**

Tel: 609-228-6898

Fax: 609-228-5909

E-mail: [tech@MedChemExpress.com](mailto:tech@MedChemExpress.com)

Address: 1 Deer Park Dr, Suite Q, Monmouth Junction, NJ 08852, USA