

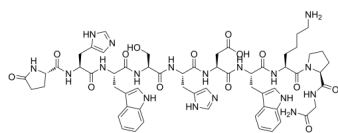
LGNRH-III, lamprey

Cat. No.: HY-P1808
Batch No.: 145695
CAS No.: 147859-97-0
Molecular Formula: C₅₉H₇₄N₁₈O₁₄

ANALYTICAL DATA

Theoretical: C(-), H(-), N(-), Peptide Content(≥60.0%)
Result: C(51.06%), H(5.80%), N(16.74%), Peptide Content(83.61%)

Chemical Structure:



Caution: Product has not been fully validated for medical applications. For research use only.

Tel: 609-228-6898

Fax: 609-228-5909

E-mail: tech@MedChemExpress.com

Address: 1 Deer Park Dr, Suite Q, Monmouth Junction, NJ 08852, USA