

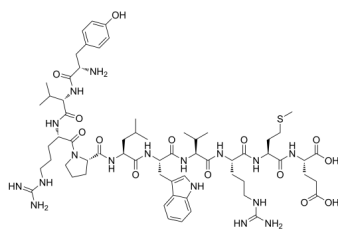
## BDC2.5 mimotope 1040-31

Cat. No.: HY-P1822  
Batch No.: 250591  
CAS No.: 329696-49-3  
Molecular Formula: C<sub>63</sub>H<sub>97</sub>N<sub>17</sub>O<sub>14</sub>S

### ANALYTICAL DATA

Theoretical: C(-), H(-), N(-), Peptide Content(≥60.0%)  
Result: C(51.93%), H(7.45%), N(16.11%), Peptide Content(91.20%)

Chemical Structure:



**Caution: Product has not been fully validated for medical applications. For research use only.**

Tel: 609-228-6898

Fax: 609-228-5909

E-mail: [tech@MedChemExpress.com](mailto:tech@MedChemExpress.com)

Address: 1 Deer Park Dr, Suite Q, Monmouth Junction, NJ 08852, USA