

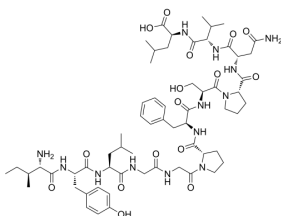
## C-Reactive Protein (CRP) (174-185)

Cat. No.: HY-P1823  
CAS No.: 147516-85-6  
Batch No.: 252112  
Chemical Name: L-Leucine, N-[N-[N2-[1-[N-[N-[1-[N-[N-[N-(N-L-isoleucyl-L-tyrosyl)-L-leucyl]glycyl]glycyl]-L-prolyl]-L-phenylalanyl]-L-seryl]-L-prolyl]-L-asparaginy]-L-valyl]- (9CI)

### PHYSICAL AND CHEMICAL PROPERTIES

Molecular Formula:  $C_{62}H_{93}N_{13}O_{16}$   
Molecular Weight: 1276.48  
Storage: Sealed storage, away from moisture and light, under nitrogen  
Powder -80°C 2 years  
-20°C 1 years  
\* In solvent : -80°C, 6 months; -20°C, 1 month (sealed storage, away from moisture and light, under nitrogen)

### Chemical Structure:



### ANALYTICAL DATA

Appearance: White to off-white (Solid)  
MS: Consistent with structure  
Purity (HPLC): 99.83%  
Conclusion: The product has been tested and complies with the given specifications.

**Caution: Product has not been fully validated for medical applications. For research use only.**

Tel: 609-228-6898

Fax: 609-228-5909

E-mail: tech@MedChemExpress.com

Address: 1 Deer Park Dr, Suite Q, Monmouth Junction, NJ 08852, USA