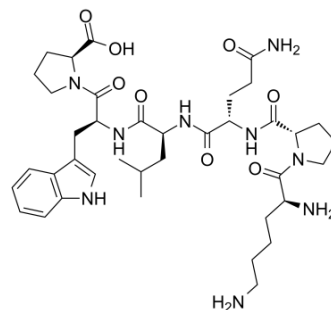


C-Reactive Protein (CRP) (201-206)

Cat. No.:	HY-P1824
CAS No.:	130348-99-1
Molecular Formula:	C ₃₈ H ₅₇ N ₉ O ₈
Molecular Weight:	767.91
Sequence:	Lys-Pro-Gln-Leu-Trp-Pro
Sequence Shortening:	KPQLWP
Target:	Others
Pathway:	Others
Storage:	Please store the product under the recommended conditions in the COA.



BIOLOGICAL ACTIVITY

Description

C-Reactive Protein (CRP) 201-206 is the 201-206 fragment of C-Reactive Protein. C-Reactive Protein (CRP), the prototypic marker of inflammation, is a cardiovascular risk marker and may promote atherogenesis^[1].

REFERENCES

[1]. Devaraj S, et al. C-reactive protein stimulates superoxide anion release and tissue factor activity in vivo. *Atherosclerosis*. 2009 Mar;203(1):67-74.

Caution: Product has not been fully validated for medical applications. For research use only.

Tel: 609-228-6898

Fax: 609-228-5909

E-mail: tech@MedChemExpress.com

Address: 1 Deer Park Dr, Suite Q, Monmouth Junction, NJ 08852, USA