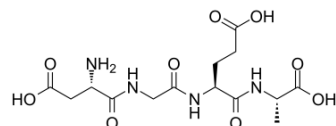


$\alpha 2\beta 1$ Integrin Ligand Peptide

Cat. No.:	HY-P1868
CAS No.:	134580-64-6
Molecular Formula:	C ₁₄ H ₂₂ N ₄ O ₉
Molecular Weight:	390.35
Sequence:	Asp-Gly-Glu-Ala
Sequence Shortening:	DGEA
Target:	Integrin
Pathway:	Cytoskeleton
Storage:	Please store the product under the recommended conditions in the Certificate of Analysis.



BIOLOGICAL ACTIVITY

Description

$\alpha 2\beta 1$ Integrin Ligand Peptide interacts with the $\alpha 2\beta 1$ integrin receptor on the cell membrane and mediates extracellular signals into cells. It is a potential antagonist of collagen receptors^[1].

REFERENCES

[1]. Graham KL, et al. Effects on rotavirus cell binding and infection of monomeric and polymeric peptides containing alpha2beta1 and alphaxbeta2 integrin ligand sequences. J Virol. 2004 Nov;78(21):11786-97.

Caution: Product has not been fully validated for medical applications. For research use only.

Tel: 609-228-6898

Fax: 609-228-5909

E-mail: tech@MedChemExpress.com

Address: 1 Deer Park Dr, Suite Q, Monmouth Junction, NJ 08852, USA