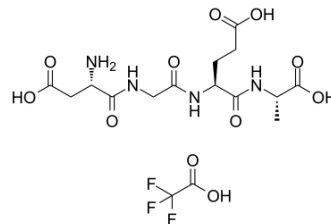


## $\alpha 2\beta 1$ Integrin Ligand Peptide TFA

Cat. No.:	HY-P1868A
Molecular Formula:	C <sub>16</sub> H <sub>23</sub> F <sub>3</sub> N <sub>4</sub> O <sub>11</sub>
Molecular Weight:	504.37
Sequence:	Asp-Gly-Glu-Ala
Sequence Shortening:	DGEA
Target:	Integrin
Pathway:	Cytoskeleton
Storage:	Protect from light Powder -80°C 2 years -20°C 1 year

\* In solvent : -80°C, 6 months; -20°C, 1 month (protect from light)



### BIOLOGICAL ACTIVITY

#### Description

$\alpha 2\beta 1$  Integrin Ligand Peptide TFA interacts with the  $\alpha 2\beta 1$  integrin receptor on the cell membrane and mediates extracellular signals into cells. It is a potential antagonist of collagen receptors<sup>[1]</sup>.

### CUSTOMER VALIDATION

- Cancer Manag Res. 2020 Nov 24;12:12067-12075.

See more customer validations on [www.MedChemExpress.com](http://www.MedChemExpress.com)

### REFERENCES

[1]. Graham KL, et al. Effects on rotavirus cell binding and infection of monomeric and polymeric peptides containing alpha2beta1 and alphaxbeta2 integrin ligand sequences. J Virol. 2004 Nov;78(21):11786-97.

**Caution: Product has not been fully validated for medical applications. For research use only.**

Tel: 609-228-6898

Fax: 609-228-5909

E-mail: [tech@MedChemExpress.com](mailto:tech@MedChemExpress.com)

Address: 1 Deer Park Dr, Suite Q, Monmouth Junction, NJ 08852, USA