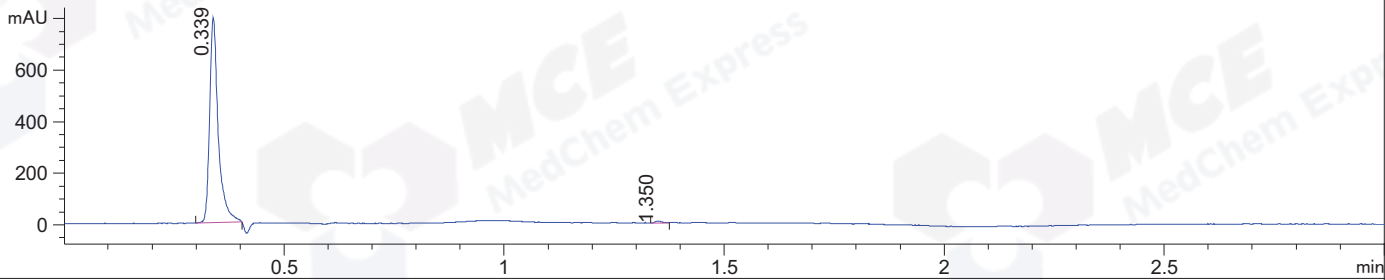
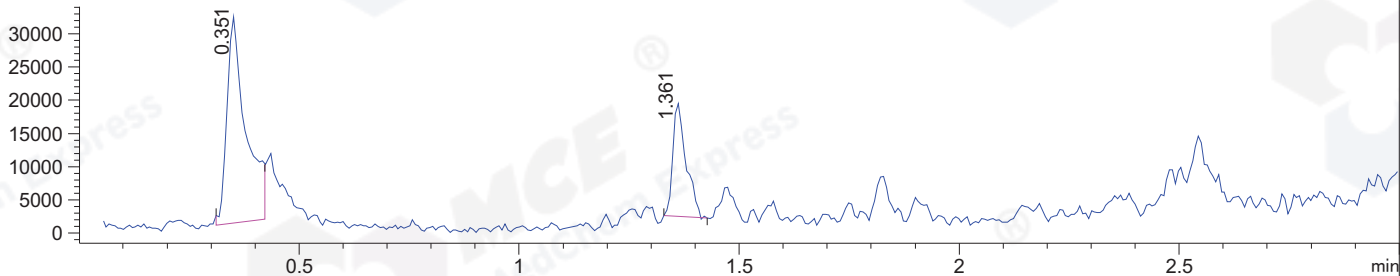


File ..\DATA\2019\20191221\794\BIZ2019-D19-SCH9-.D Tgt Mass (CHM):  
 Injection Date : 21 Dec 19 2:26 pm +0800 Seq. Line : 41  
 Sample Name : BIZ2019-D19-SCH9 Location : P1-C-03  
 Acq. Operator : ZJ\_1432 Inj : 1  
 Spec. Reported : MS Integration Inj Volume : 7 ul  
 Acq. Method : D:\Chem32\1\data\2019\20191221\794\1-POS-3MIN.M  
 Analysis Method : D:\CHEM32\1\DATA\2019\20191221\794\1-POS-3MIN.M  
 Catalog No : HY-P1868A Batch#58018  
 Method Info : Mobile Phase: A: water(0.01%TFA) B:ACN(0.01%TFA)  
 Gradient: 5% to 95%B within 1.3 min  
 Flow Rate :1.8ml/min  
 Column :SunFire C18, 4.6\*50mm,3.5um A-RP-433  
 Oven Temperature : 45□

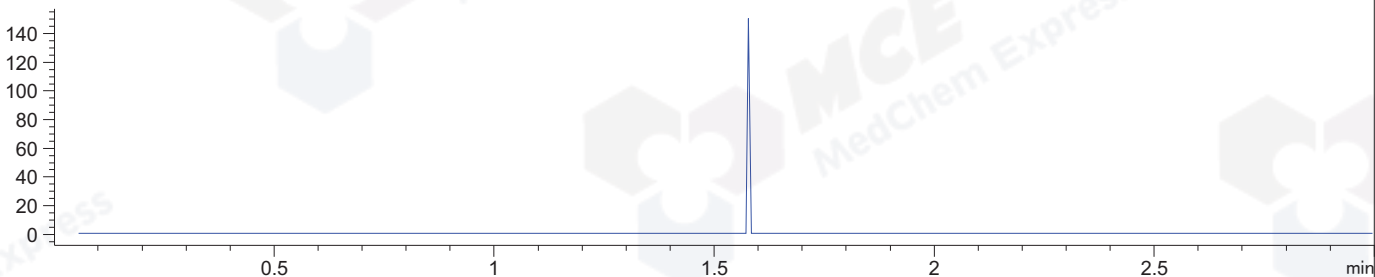
DAD1 B, Sig=214,4 Ref=off



MSD1 TIC, MS File ES-API, Pos, Scan, Frag: 70



Ion 505, MSD1 505, Target Mass 504 +H Positive, EIC=504.7:505.7



Integration Results for DAD1 B, Sig=214,4 Ref=off

RetTim	Width	Area	Height	Area%	MS (+)
0.34	0.02	1085.73	794.03	99.33	391
1.35	0.02	7.28	7.04	0.67	339

Integration Results for MSD1 TIC, MS File

RetTim	Width	Area	Height	Area%	MS (+)
0.35	0.04	92524.29	30936.55	72.28	391
1.36	0.03	35491.23	17080.79	27.72	339

Ret. Time: 0.35

<<<< POSITIVE SPECTRA >>>>



Ret. Time: 1.36

