

## [Gln8]-C517 (LH-RH), chicken

Cat. No.: HY-P1905

Batch No.: 102993

CAS No.: 47922-48-5

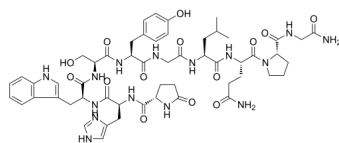
Molecular Formula: C<sub>54</sub>H<sub>71</sub>N<sub>15</sub>O<sub>14</sub>

### ANALYTICAL DATA

Theoretical: C(-), H(-), N(-), Peptide Content(≥60.0%)

Result: C(51.87%)、H(6.69%)、N(16.43%)、Peptide Content(90.30%)

Chemical Structure:



**Caution: Product has not been fully validated for medical applications. For research use only.**

Tel: 609-228-6898

Fax: 609-228-5909

E-mail: [tech@MedChemExpress.com](mailto:tech@MedChemExpress.com)

Address: 1 Deer Park Dr, Suite Q, Monmouth Junction, NJ 08852, USA