

## Cyclo(L-Pro-L-Val)

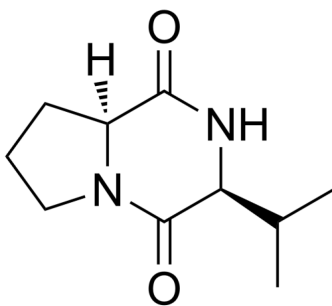
---

Cat. No.: HY-P1938  
Batch No.: 263886  
CAS No.: 2854-40-2  
Molecular Formula: C<sub>10</sub>H<sub>16</sub>N<sub>2</sub>O<sub>2</sub>

### ANALYTICAL DATA

Theoretical: C(-), H(-), N(-), Peptide Content(≥60.0%)  
Result: C(60.86%), H(8.637%), N(15.10%), Peptide Content(88.8%)

Chemical Structure:



**Caution: Product has not been fully validated for medical applications. For research use only.**

Tel: 609-228-6898

Fax: 609-228-5909

E-mail: [tech@MedChemExpress.com](mailto:tech@MedChemExpress.com)

Address: 1 Deer Park Dr, Suite Q, Monmouth Junction, NJ 08852, USA