

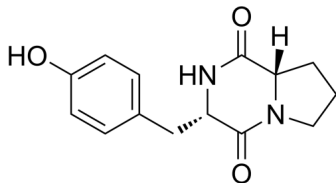
Maculosin

Cat. No.: HY-P1940
Batch No.: 153860
CAS No.: 4549-02-4
Molecular Formula: C₁₄H₁₆N₂O₃

ANALYTICAL DATA

Theoretical: C(-), H(-), N(-), Peptide Content(≥60.0%)
Result: C(64.24%), H(6.39%), N(10.55%), Peptide Content(98.00%)

Chemical Structure:



Caution: Product has not been fully validated for medical applications. For research use only.

Tel: 609-228-6898

Fax: 609-228-5909

E-mail: tech@MedChemExpress.com

Address: 1 Deer Park Dr, Suite Q, Monmouth Junction, NJ 08852, USA