

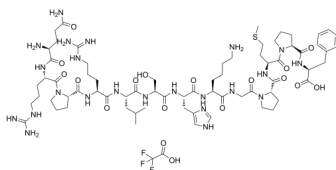
Apelin-13 (TFA)

Cat. No.: HY-P1944A
Batch No.: 149381
Molecular Formula: C₇₁H₁₁₂F₃N₂₃O₁₈S

ANALYTICAL DATA

Theoretical: C(-), H(-), N(-), Peptide Content(≥60.0%)
Result: C(41.92%), H(5.60%), N(14.47%), Peptide Content(69.70%)

Chemical Structure:



Caution: Product has not been fully validated for medical applications. For research use only.

Tel: 609-228-6898

Fax: 609-228-5909

E-mail: tech@MedChemExpress.com

Address: 1 Deer Park Dr, Suite Q, Monmouth Junction, NJ 08852, USA