

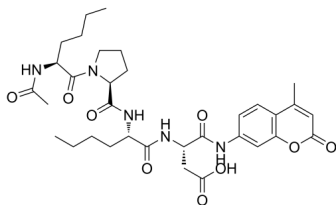
Ac-Nle-Pro-Nle-Asp-AMC

Cat. No.: HY-P2016
Batch No.: 250597
CAS No.: 355140-49-7
Molecular Formula: C₃₃H₄₅N₅O₉

ANALYTICAL DATA

Theoretical: C(-), H(-), N(-), Peptide Content(≥60.0%)
Result: C(57.73%), H(6.98%), N(10.29%), Peptide Content(96.30%)

Chemical Structure:



Caution: Product has not been fully validated for medical applications. For research use only.

Tel: 609-228-6898

Fax: 609-228-5909

E-mail: tech@MedChemExpress.com

Address: 1 Deer Park Dr, Suite Q, Monmouth Junction, NJ 08852, USA