

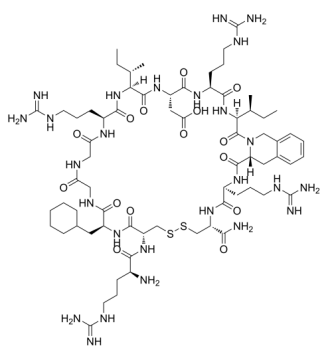
A 71915

Cat. No.: HY-P2026
Batch No.: 252601
CAS No.: 132956-87-7
Molecular Formula: C₆₉H₁₁₆N₂₆O₁₅S₂

ANALYTICAL DATA

Theoretical: C(-), H(-), N(-), Peptide Content(≥60.0%)
Result: C(44.65%), H(6.82%), N(19.65%), Peptide Content(87.10%)

Chemical Structure:



Caution: Product has not been fully validated for medical applications. For research use only.

Tel: 609-228-6898

Fax: 609-228-5909

E-mail: tech@MedChemExpress.com

Address: 1 Deer Park Dr, Suite Q, Monmouth Junction, NJ 08852, USA