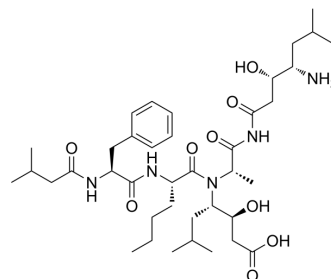


SR 42128

Cat. No.:	HY-P2130
CAS No.:	98092-14-9
Molecular Formula:	C ₃₉ H ₆₅ N ₅ O ₉
Molecular Weight:	747.96
Sequence:	{Isovaleryl}-Phe-{Nle}-{Sta}-Ala-{Sta}
Sequence Shortening:	{Isovaleryl}-F-{Nle}-{Sta}-A-{Sta}
Target:	Renin
Pathway:	Metabolic Enzyme/Protease
Storage:	Please store the product under the recommended conditions in the Certificate of Analysis.



BIOLOGICAL ACTIVITY

Description

SR 42128 is a potent renin inhibitor. SR 42128 potently inhibits primate renins whereas other animal renins are much less inhibited^[1].

REFERENCES

[1]. M De Claviere, et al. In vitro and in vivo inhibition of human and primate renin by a new potent renin inhibitor: SR 42128. J Cardiovasc Pharmacol. 1985;7 Suppl 4:S58-61.

Caution: Product has not been fully validated for medical applications. For research use only.

Tel: 609-228-6898

Fax: 609-228-5909

E-mail: tech@MedChemExpress.com

Address: 1 Deer Park Dr, Suite Q, Monmouth Junction, NJ 08852, USA