

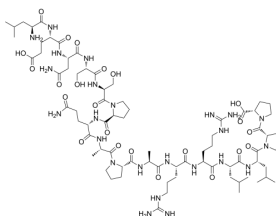
## BigLEN(rat)

Cat. No.:	HY-P2155
CAS No.:	369377-66-2
Batch No.:	250589
Chemical Name:	L-Proline, L-leucyl-L- $\alpha$ -glutamyl-L-asparaginyll-L-seryl-L-seryl-L-prolyl-L-glutaminyll-L-alanyl-L-prolyl-L-alanyl-L-arginyl-L-arginyl-L-leucyl-L-leucyl-L-prolyl-

### PHYSICAL AND CHEMICAL PROPERTIES

Molecular Formula:	$C_{76}H_{128}N_{24}O_{23}$
Molecular Weight:	1745.98
Storage:	Sealed storage, away from moisture and light, under nitrogen Powder      -80°C    2 years -20°C    1 years * In solvent : -80°C, 6 months; -20°C, 1 month (sealed storage, away from moisture and light, under nitrogen)

### Chemical Structure:



### ANALYTICAL DATA

Appearance:	White to off-white (Solid)
MS:	Consistent with structure
Purity (HPLC):	98.98%
Conclusion:	The product has been tested and complies with the given specifications.

**Caution: Product has not been fully validated for medical applications. For research use only.**

Tel: 609-228-6898

Fax: 609-228-5909

E-mail: tech@MedChemExpress.com

Address: 1 Deer Park Dr, Suite Q, Monmouth Junction, NJ 08852, USA