

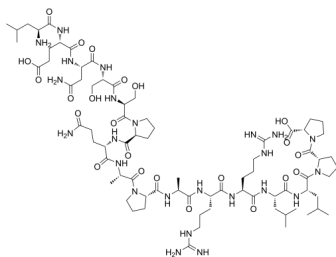
BigLEN(rat)

Cat. No.: HY-P2155
Batch No.: 250589
CAS No.: 369377-66-2
Molecular Formula: C₇₆H₁₂₈N₂₄O₂₃

ANALYTICAL DATA

Theoretical: C(-), H(-), N(-), Peptide Content(≥60.0%)
Result: C(46.11%), H(7.48%), N(17.14%), Peptide Content(89.00%)

Chemical Structure:



Caution: Product has not been fully validated for medical applications. For research use only.

Tel: 609-228-6898

Fax: 609-228-5909

E-mail: tech@MedChemExpress.com

Address: 1 Deer Park Dr, Suite Q, Monmouth Junction, NJ 08852, USA