

TAK-683 (acetate)

Cat. No.: HY-P2161B

Batch No.: 110198

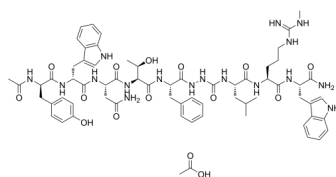
Molecular Formula: C₆₆H₈₇N₁₇O₁₅

ANALYTICAL DATA

Theoretical: C(-), H(-), N(-), Peptide Content(≥60.0%)

Result: C(53.75%), H(6.73%), N(16.02%), Peptide Content(91.39%)

Chemical Structure:



Caution: Product has not been fully validated for medical applications. For research use only.

Tel: 609-228-6898

Fax: 609-228-5909

E-mail: tech@MedChemExpress.com

Address: 1 Deer Park Dr, Suite Q, Monmouth Junction, NJ 08852, USA