

## TAT-amide

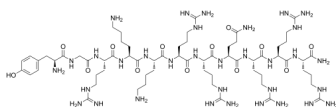
---

Cat. No.: HY-P2193  
Batch No.: 250595  
CAS No.: 697226-52-1  
Molecular Formula:  $C_{64}H_{119}N_{33}O_{13}$

### ANALYTICAL DATA

Theoretical: C(-), H(-), N(-), Peptide Content( $\geq 60.0\%$ )  
Result: C(39.83%), H(7.10%), N(21.73%), Peptide Content(73.30%)

Chemical Structure:



**Caution: Product has not been fully validated for medical applications. For research use only.**

Tel: 609-228-6898

Fax: 609-228-5909

E-mail: [tech@MedChemExpress.com](mailto:tech@MedChemExpress.com)

Address: 1 Deer Park Dr, Suite Q, Monmouth Junction, NJ 08852, USA