

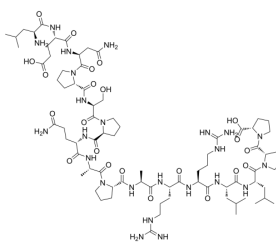
BigLEN(mouse)

Cat. No.:	HY-P2210
CAS No.:	501036-69-7
Batch No.:	149073
Chemical Name:	L-Proline, L-leucyl-L- α -glutamyl-L-asparaginyl-L-prolyl-L-seryl-L-prolyl-L-glutamyl-L-alanyl-L-prolyl-L-alanyl-L-arginyl-L-arginyl-L-leucyl-L-leucyl-L-prolyl-

PHYSICAL AND CHEMICAL PROPERTIES

Molecular Formula:	$C_{78}H_{130}N_{24}O_{22}$
Molecular Weight:	1756.01
Storage:	Sealed storage, away from moisture and light
	Powder -80°C 2 years
	-20°C 1 year
	* In solvent : -80°C, 6 months; -20°C, 1 month (sealed storage, away from moisture and light)

Chemical Structure:



ANALYTICAL DATA

Appearance:	White to off-white (Solid)
Purity (HPLC):	99.98%
Conclusion:	The product has been tested and complies with the given specifications.

Caution: Product has not been fully validated for medical applications. For research use only.

Tel: 609-228-6898 Fax: 609-228-5909 E-mail: tech@MedChemExpress.com
Address: 1 Deer Park Dr, Suite Q, Monmouth Junction, NJ 08852, USA