

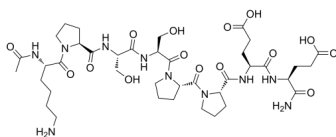
Angstrom6

Cat. No.: HY-P2230
Batch No.: 309780
CAS No.: 220334-14-5
Molecular Formula: C₃₉H₆₂N₁₀O₁₅

ANALYTICAL DATA

Theoretical: C(-), H(-), N(-), Peptide Content(≥60.0%)
Result: C(46.52%), H(7.38%), N(14.39%), Peptide Content(93.56%)

Chemical Structure:



Caution: Product has not been fully validated for medical applications. For research use only.

Tel: 609-228-6898

Fax: 609-228-5909

E-mail: tech@MedChemExpress.com

Address: 1 Deer Park Dr, Suite Q, Monmouth Junction, NJ 08852, USA