

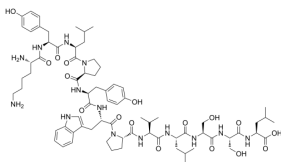
## KYL peptide

Cat. No.: HY-P2264  
 CAS No.: 676657-00-4  
 Batch No.: 273009  
 Chemical Name: L-Leucine, L-lysyl-L-tyrosyl-L-leucyl-L-prolyl-L-tyrosyl-L-tryptophyl-L-prolyl-L-valyl-L-leucyl-L-seryl-L-seryl-

### PHYSICAL AND CHEMICAL PROPERTIES

Molecular Formula:  $C_{74}H_{108}N_{14}O_{17}$   
 Molecular Weight: 1465.73  
 Storage: Sealed storage, away from moisture and light, under nitrogen  
 Powder -80°C 2 years  
 -20°C 1 year  
 \* In solvent : -80°C, 6 months; -20°C, 1 month (sealed storage, away from moisture and light, under nitrogen)

#### Chemical Structure:



### ANALYTICAL DATA

Appearance: White to off-white (Solid)  
 MS: Consistent with structure  
 Purity (HPLC): 99.09%  
 Conclusion: The product has been tested and complies with the given specifications.

**Caution: Product has not been fully validated for medical applications. For research use only.**

Tel: 609-228-6898

Fax: 609-228-5909

E-mail: tech@MedChemExpress.com

Address: 1 Deer Park Dr, Suite Q, Monmouth Junction, NJ 08852, USA