

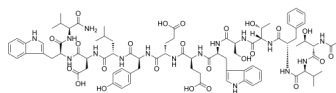
Pep2-8

Cat. No.: HY-P2276
Batch No.: 238929
CAS No.: 1541011-97-5
Molecular Formula: C₈₃H₁₁₀N₁₆O₂₄

ANALYTICAL DATA

Theoretical: C(-), H(-), N(-), Peptide Content(≥60.0%)
Result: C(54.76%), H(6.87%), N(13.01%), Peptide Content(99.60%)

Chemical Structure:



Caution: Product has not been fully validated for medical applications. For research use only.

Tel: 609-228-6898

Fax: 609-228-5909

E-mail: tech@MedChemExpress.com

Address: 1 Deer Park Dr, Suite Q, Monmouth Junction, NJ 08852, USA