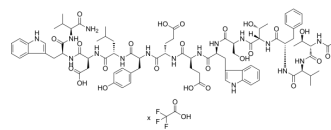


Pep2-8 TFA

Cat. No.:	HY-P2276A
Molecular Formula:	C ₈₅ H ₁₁₁ F ₃ N ₁₆ O ₂₆
Sequence:	Ac-Thr-Val-Phe-Thr-Ser-Trp-Glu-Glu-Tyr-Leu-Asp-Trp-Val-NH ₂
Sequence Shortening:	Ac-TVFTSWEEYLDWV-NH ₂
Target:	Others
Pathway:	Others
Storage:	Sealed storage, away from moisture
	Powder -80°C 2 years
	-20°C 1 year
	* In solvent : -80°C, 6 months; -20°C, 1 month (sealed storage, away from moisture)



BIOLOGICAL ACTIVITY

Description	Pep2-8 is a peptide which has enhanced the antagonistic activity of proprotein convertase subtilin/ kexin 9 type (PCSK9) ^[1] .								
In Vitro	<p>Pep2-8 TFA binds to C-terminally truncated PCSK9^[1].</p> <p>Pep2-8 TFA restored LDL uptake of PCSK9-treated HepG2 cells to about 90% of control activity at a concentration of 50 μM^[1].</p> <p>MCE has not independently confirmed the accuracy of these methods. They are for reference only.</p> <p>Cell Viability Assay^[1]</p> <table border="1" style="width: 100%; border-collapse: collapse;"> <tr> <td style="width: 30%;">Cell Line:</td> <td>HepG2 cell.</td> </tr> <tr> <td>Concentration:</td> <td>15 μg/mL.</td> </tr> <tr> <td>Incubation Time:</td> <td>4 h.</td> </tr> <tr> <td>Result:</td> <td>Inhibited PCSK9 activity.</td> </tr> </table>	Cell Line:	HepG2 cell.	Concentration:	15 μg/mL.	Incubation Time:	4 h.	Result:	Inhibited PCSK9 activity.
Cell Line:	HepG2 cell.								
Concentration:	15 μg/mL.								
Incubation Time:	4 h.								
Result:	Inhibited PCSK9 activity.								

REFERENCES

[1]. Lammi C, et al. Biological Characterization of Computationally Designed Analogs of peptide TVFTSWEEYLDWV (Pep2-8) with Increased PCSK9 Antagonistic Activity. Sci Rep. 2019 Feb 20;9(1):2343.

Caution: Product has not been fully validated for medical applications. For research use only.

Tel: 609-228-6898

Fax: 609-228-5909

E-mail: tech@MedChemExpress.com

Address: 1 Deer Park Dr, Suite Q, Monmouth Junction, NJ 08852, USA