

## Pep2-8 (TFA)

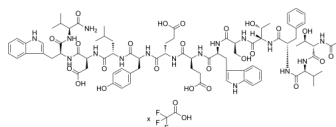
---

Cat. No.: HY-P2276A  
Batch No.: 294802  
Molecular Formula: C<sub>85</sub>H<sub>111</sub>F<sub>3</sub>N<sub>16</sub>O<sub>26</sub>

### ANALYTICAL DATA

Theoretical: C(-), H(-), N(-), Peptide Content(≥60.0%)  
Result: C(55.03%), H(6.26%), N(12.35%), Peptide Content(94.56%)

Chemical Structure:



**Caution: Product has not been fully validated for medical applications. For research use only.**

Tel: 609-228-6898

Fax: 609-228-5909

E-mail: [tech@MedChemExpress.com](mailto:tech@MedChemExpress.com)

Address: 1 Deer Park Dr, Suite Q, Monmouth Junction, NJ 08852, USA