

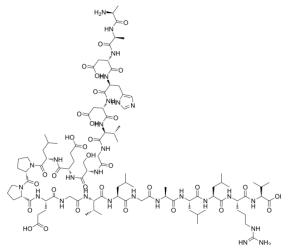
PEN (human)

Cat. No.: HY-P2278
 CAS No.: 597578-70-6
 Batch No.: 279902
 Chemical Name: L-Valine, L-alanyl-L-alanyl-L- α -aspartyl-L-histidyl-L- α -aspartyl-L-valylglycyl-L-seryl-L- α -glutamyl-L-leucyl-L-prolyl-L-prolyl-L- α -glutamylglycyl-L-valyl-L-leucylglycyl-L-alanyl-L-leucyl-L-leucyl-L-arginyl-

PHYSICAL AND CHEMICAL PROPERTIES

Molecular Formula: $C_{97}H_{159}N_{27}O_{32}$
 Molecular Weight: 2215.46
 Storage: Sealed storage, away from moisture and light, under nitrogen
 Powder -80°C 2 years
 -20°C 1 year
 * In solvent : -80°C, 6 months; -20°C, 1 month (sealed storage, away from moisture and light, under nitrogen)

Chemical Structure:



ANALYTICAL DATA

Appearance: White to off-white (Solid)
 Purity (HPLC): 99.68%
 Conclusion: The product has been tested and complies with the given specifications.

Caution: Product has not been fully validated for medical applications. For research use only.

Tel: 609-228-6898

Fax: 609-228-5909

E-mail: tech@MedChemExpress.com

Address: 1 Deer Park Dr, Suite Q, Monmouth Junction, NJ 08852, USA