

## D-3

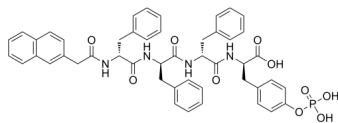
---

Cat. No.: HY-P2286  
Batch No.: 272325  
CAS No.: 1967815-98-0  
Molecular Formula: C<sub>48</sub>H<sub>47</sub>N<sub>4</sub>O<sub>10</sub>P

### ANALYTICAL DATA

Theoretical: C(-), H(-), N(-), Peptide Content(≥60.0%)  
Result: C(62.15%), H(5.58%), N(6.21%), Peptide Content(96.60%)

Chemical Structure:



**Caution: Product has not been fully validated for medical applications. For research use only.**

Tel: 609-228-6898

Fax: 609-228-5909

E-mail: [tech@MedChemExpress.com](mailto:tech@MedChemExpress.com)

Address: 1 Deer Park Dr, Suite Q, Monmouth Junction, NJ 08852, USA