

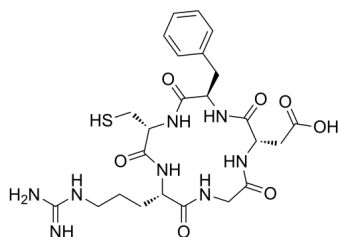
Cyclo(Arg-Gly-Asp-D-Phe-Cys)

Cat. No.: HY-P2300
Batch No.: 290897
CAS No.: 862772-11-0
Molecular Formula: C₂₄H₃₄N₈O₇S

ANALYTICAL DATA

Theoretical: C(-), H(-), N(-), Peptide Content(≥60.0%)
Result: C(44.47%), H(5.25%), N(16.55%), Peptide Content(85.4%)

Chemical Structure:



Caution: Product has not been fully validated for medical applications. For research use only.

Tel: 609-228-6898

Fax: 609-228-5909

E-mail: tech@MedChemExpress.com

Address: 1 Deer Park Dr, Suite Q, Monmouth Junction, NJ 08852, USA