

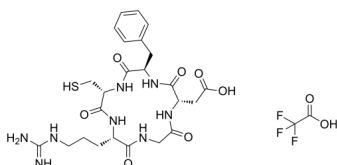
Cyclo(Arg-Gly-Asp-D-Phe-Cys) (TFA)

Cat. No.: HY-P2300A
Batch No.: 250383
Molecular Formula: C₂₆H₃₅F₃N₈O₉S

ANALYTICAL DATA

Theoretical: C(-), H(-), N(-), Peptide Content(≥60.0%)
Result: C(43.84%), H(5.55%), N(16.11%), Peptide Content(83.2%)

Chemical Structure:



Caution: Product has not been fully validated for medical applications. For research use only.

Tel: 609-228-6898

Fax: 609-228-5909

E-mail: tech@MedChemExpress.com

Address: 1 Deer Park Dr, Suite Q, Monmouth Junction, NJ 08852, USA