

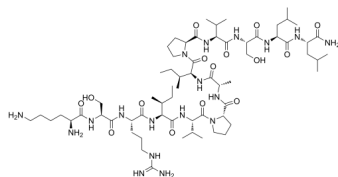
IDR-1

Cat. No.: HY-P2320
Batch No.: 250586
CAS No.: 940291-10-1
Molecular Formula: C₆₅H₁₁₈N₁₈O₁₅

ANALYTICAL DATA

Theoretical: C(-), H(-), N(-), Peptide Content(≥60.0%)
Result: C(50.13%), H(8.51%), N(16.07%), Peptide Content(88.70%)

Chemical Structure:



Caution: Product has not been fully validated for medical applications. For research use only.

Tel: 609-228-6898

Fax: 609-228-5909

E-mail: tech@MedChemExpress.com

Address: 1 Deer Park Dr, Suite Q, Monmouth Junction, NJ 08852, USA