

## LCKLSL (hydrochloride)

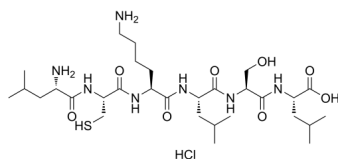
---

Cat. No.: HY-P2333A  
Batch No.: 237970  
Molecular Formula: C<sub>30</sub>H<sub>58</sub>ClN<sub>7</sub>O<sub>8</sub>S

### ANALYTICAL DATA

Theoretical: C(-), H(-), N(-), Peptide Content(≥60.0%)  
Result: C(44.80%), H(8.11%), N(12.37%), Peptide Content(85.30%)

Chemical Structure:



**Caution: Product has not been fully validated for medical applications. For research use only.**

Tel: 609-228-6898

Fax: 609-228-5909

E-mail: [tech@MedChemExpress.com](mailto:tech@MedChemExpress.com)

Address: 1 Deer Park Dr, Suite Q, Monmouth Junction, NJ 08852, USA