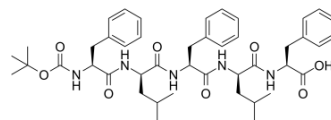


{Boc}-Phe-Leu-Phe-Leu-Phe

Cat. No.:	HY-P2355
CAS No.:	66556-73-8
Molecular Formula:	C ₄₄ H ₅₉ N ₅ O ₈
Molecular Weight:	785.97
Sequence Shortening:	{Boc}-FLFLF
Target:	Others
Pathway:	Others
Storage:	Please store the product under the recommended conditions in the COA.



BIOLOGICAL ACTIVITY

Description	{Boc}-Phe-Leu-Phe-Leu-Phe ({Boc}-FLFLF) is a formyl peptide receptor (FPR) family antagonist that preferentially inhibits activity triggered through the formyl peptide receptor ^[1] .
--------------------	---

REFERENCES

[1]. Anna-Lena Stenfeldt, et al. Cyclosporin H, Boc-MLF and Boc-FLFLF are antagonists that preferentially inhibit activity triggered through the formyl peptide receptor. *Inflammation*. 2007 Dec;30(6):224-9.

Caution: Product has not been fully validated for medical applications. For research use only.

Tel: 609-228-6898

Fax: 609-228-5909

E-mail: tech@MedChemExpress.com

Address: 1 Deer Park Dr, Suite Q, Monmouth Junction, NJ 08852, USA