

## Histone H1-derived Peptide

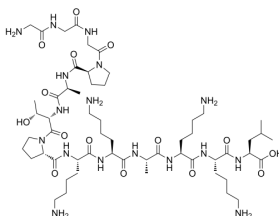
Cat. No.:	HY-P2480
CAS No.:	889112-06-5
Batch No.:	252603
Chemical Name:	L-Leucine, glycyglycylglycyl-L-prolyl-L-alanyl-L-threonyl-L-prolyl-L-lysyl-L-lysyl-L-alanyl-L-lysyl-L-lysyl-

### PHYSICAL AND CHEMICAL PROPERTIES

Molecular Formula:	$C_{56}H_{101}N_{17}O_{15}$
Molecular Weight:	1252.51
Storage:	Sealed storage, away from moisture and light, under nitrogen
	Powder      -80°C    2 years
	-20°C    1 years

\* In solvent : -80°C, 6 months; -20°C, 1 month (sealed storage, away from moisture and light, under nitrogen)

### Chemical Structure:



### ANALYTICAL DATA

Appearance:	White to off-white (Solid)
MS:	Consistent with structure
Purity (HPLC):	99.50%
Conclusion:	The product has been tested and complies with the given specifications.

**Caution: Product has not been fully validated for medical applications. For research use only.**

Tel: 609-228-6898

Fax: 609-228-5909

E-mail: tech@MedChemExpress.com

Address: 1 Deer Park Dr, Suite Q, Monmouth Junction, NJ 08852, USA