

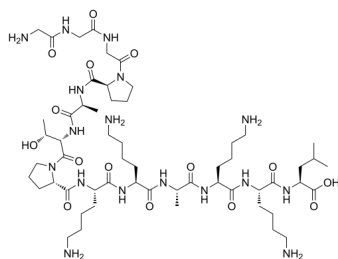
Histone H1-derived Peptide

Cat. No.: HY-P2480
Batch No.: 252603
CAS No.: 889112-06-5
Molecular Formula: $C_{56}H_{101}N_{17}O_{15}$

ANALYTICAL DATA

Theoretical: C(-), H(-), N(-), Peptide Content($\geq 60.0\%$)
Result: C(51.79%), H(9.88%), N(15.36%), Peptide Content(80.80%)

Chemical Structure:



Caution: Product has not been fully validated for medical applications. For research use only.

Tel: 609-228-6898

Fax: 609-228-5909

E-mail: tech@MedChemExpress.com

Address: 1 Deer Park Dr, Suite Q, Monmouth Junction, NJ 08852, USA