

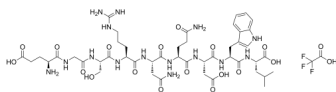
Gp100 (25-33), mouse (TFA)

Cat. No.: HY-P2506A
Batch No.: 89636
Molecular Formula: C₄₈H₇₀F₃N₁₅O₁₉

ANALYTICAL DATA

Theoretical: C(-), H(-), N(-), Peptide Content(≥60.0%)
Result: C(43.54%), H(5.83%), N(15.18%), Peptide Content(79.76%)

Chemical Structure:



Caution: Product has not been fully validated for medical applications. For research use only.

Tel: 609-228-6898

Fax: 609-228-5909

E-mail: tech@MedChemExpress.com

Address: 1 Deer Park Dr, Suite Q, Monmouth Junction, NJ 08852, USA