

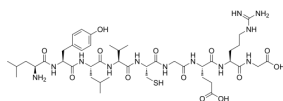
Insulin β Chain Peptide (15-23)

Cat. No.: HY-P2511
 CAS No.: 247044-67-3
 Batch No.: 272302
 Chemical Name: Glycine, L-leucyl-L-tyrosyl-L-leucyl-L-valyl-L-cysteinylglycyl-L- α -glutamyl-L-arginyl-

PHYSICAL AND CHEMICAL PROPERTIES

Molecular Formula: $C_{44}H_{72}N_{12}O_{13}S$
 Molecular Weight: 1009.18
 Storage: Sealed storage, away from moisture and light, under nitrogen
 Powder -80°C 2 years
 -20°C 1 years
 * In solvent : -80°C, 6 months; -20°C, 1 month (sealed storage, away from moisture and light, under nitrogen)

Chemical Structure:



ANALYTICAL DATA

Appearance: White to off-white (Solid)
 MS: Consistent with structure
 Purity (HPLC): 98.03%
 Conclusion: The product has been tested and complies with the given specifications.

Caution: Product has not been fully validated for medical applications. For research use only.

Tel: 609-228-6898

Fax: 609-228-5909

E-mail: tech@MedChemExpress.com

Address: 1 Deer Park Dr, Suite Q, Monmouth Junction, NJ 08852, USA