

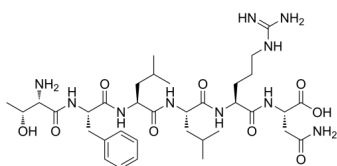
Protease-Activated Receptor-1, PAR-1 Agonist

Cat. No.: HY-P2518
Batch No.: 272300
CAS No.: 141136-85-8
Molecular Formula: C₃₅H₅₈N₁₀O₉

ANALYTICAL DATA

Theoretical: C(-), H(-), N(-), Peptide Content(≥60.0%)
Result: C(49.84%), H(7.63%), N(16.89%), Peptide Content(92.0%)

Chemical Structure:



Caution: Product has not been fully validated for medical applications. For research use only.

Tel: 609-228-6898

Fax: 609-228-5909

E-mail: tech@MedChemExpress.com

Address: 1 Deer Park Dr, Suite Q, Monmouth Junction, NJ 08852, USA