

## OVA (329-337)

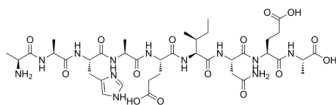
---

Cat. No.: HY-P2531  
Batch No.: 159295  
CAS No.: 276889-40-8  
Molecular Formula: C<sub>38</sub>H<sub>60</sub>N<sub>12</sub>O<sub>15</sub>

### ANALYTICAL DATA

Theoretical: C(-), H(-), N(-), Peptide Content(≥60.0%)  
Result: C(44.53%), H(6.74%), N(16.07%), Peptide Content(88.40%)

Chemical Structure:



**Caution: Product has not been fully validated for medical applications. For research use only.**

Tel: 609-228-6898

Fax: 609-228-5909

E-mail: tech@MedChemExpress.com

Address: 1 Deer Park Dr, Suite Q, Monmouth Junction, NJ 08852, USA